

# ==== Shimadzu LabSolutions Analysis Report =====

Sample Name : HD\_GL\_141024\_N\_600\_4  
 Sample ID :  
 Data Filename : HD\_GL\_141024\_N\_600\_4\_20241014\_DN\_HD\_GL\_N\_600\_SFB\_B\_ST1\_0.8 mL\_45 m  
 Method Filename : SFB\_B\_ST1\_0.8 mL\_45 min\_Start.lcm  
 Batch Filename : 20241014\_DN\_HD\_GL\_N\_600.lcb  
 Vial # : 1-41  
 Injection Volume : 10 uL  
 Date Acquired : 10/14/2024 9:14:48 PM  
 Date Processed : 10/14/2024 9:59:48 PM

Sample Type : Unknown  
 Acquired by : System Administrator  
 Processed by : System Administrator

---

## <Method>

### <<Header>>

Generated : 4/24/2024 3:47:23 PM  
 GeneratedBy : System Administrator  
 Modified : 10/14/2024 5:09:01 PM  
 ModifiedBy : System Administrator

### <<System Controller>>

Model : SCL-40  
 Event1 : Off  
 Event2 : Off  
 Sample Load Timing : Off

### <<Data Acquisition>>

LC Stop Time : 45.00 min  
 Detector A Name : Detector A  
 Detector A Sampling Frequency : 2 Hz  
 Detector A Start Time : 0.00 min  
 Detector A End Time : 45.00 min

### <<Pump>>

Mode : Isocratic flow  
 Pump A : LC-40D  
 Pump A Flow/Pressure : Flow  
 Pump System A Flow : 0.8000 mL/min  
 Pump System A Flow Slope : 20.00 min  
 Pump A PressMax : 90 bar  
 Pump A PressMin : 0 bar  
 Pump A Valve Model : Switching Valve  
 Pump A Valve : B  
 Pump A Compressibility Setting : On  
 Pump A Mobile Phase Settings : 0.45 /GPa

### <<Autosampler>>

Autosampler Model : SIL-40  
 Enable Autosampler : Use  
 Rinse Type : External only  
 Specify Plate : Off  
 Rinsing Volume : 500 uL  
 Cut Off Loop : Off  
 Specify Needle Stroke : Off  
 Rinsing Speed : 35 uL/sec  
 Sampling Speed : 5.0 uL/sec  
 Rinse Port R0 Purge Time : 2.0 min  
 Measuring Line Purge Time : 5.0 min  
 Rinse Mode : Before and after aspiration  
 Rinse Dip Time : 0 sec  
 Measuring Line Purge Volume : 100 uL  
 Air Gap Volume : Off  
 Rinse Port Liquid : R0

### <<Sample Pretreatment>>

Mode : Standard

### <<Oven>>

Oven Model : CTO-40C  
 Enable Oven : Use  
 Oven Temperature : 25 C  
 Maximum Temperature : 105 C

Ready Check	: On
Wait Time	: 5 min
Ready Range	: 1.0 C
Fan Speed	: Auto
Cooler Mode	: Auto
Valve 1/L	: FCV-0206
Valve 1/L Position	: 1: Column1

&lt;&lt;Detector A&gt;&gt;

Model	: RID-20A
Mode	: Analytical
Polarity	: +
Use Cell Temp.	: Use
Cell Temp.	: 40.0 C
Response	: 1.5 sec
Intensity Unit	: Volt
Auxiliary Range	: 1.0E-3 RIU/V
Recorder Range	: 100.00 uRIU/FS
Synchronize with Auxiliary	: Off
Purge Time	: 20 min

## <<LC Time Program>>

Time	Module	Command	Value	Comment
0.01	RID-20A(DET.A)	Zero		
45.00	Controller	Stop		

## <<Peak Integration>>

```

<Detector A>
Channel                      : Ch1
Width                        : 5 sec
Slope                        : 2000 uV/min
Drift                         : 0 uV/min
T.DBL                        : 1000 min
Max Slices                   : 0
Peak Top Detection           : Normal
RT Compensation Mode         : Fine
Min.Area/Height is made effective in Manual Integration : Off
Min.Area/Height              : 1000 counts
Calculated by                : Area
Noise Calculation Settings    : Noise Data : Current Data
                               Calculation Method : ASTM
                               Range : Whole Range
                               Interval : 0.5 min
                               Include the Peak Detected Range : Off
                               Detection Limit Coefficient : 3.3
                               Quantitative Limit Coefficient : 10.0
Drift Calculation Settings    : 0.000 - 15.000 min

```

&lt;&lt;Integration Time Program(Method)&gt;&gt;

```
<Detector A>
Channel      : Ch1
Time Program : None
```

&lt;&lt;Integration Time Program(Data)&gt;&gt;

```
<Detector A>
Channel      : Ch1
Time Program : None
```

<<Identification>>

```
<Detector A>
Window/Band           : Window
Window                : 5.00 %
Identification Method  : Absolute
Peak Selection         : Closest Peak
Display not identified peaks : Not display
```

<<Quantitative>>

<Detector A>	
Quantitative Method	: External Standard
Calculated by	: Area
# of Calibration Levels	: 14
Curve Fit Type	: Linear
Zero	: Not Forced
Weighting Method	: None
X Axis of Calib. Curve	: Conc.
Units	: mol/L
Format of Conc.	: Decimals
Format of Conc. Figure	: 5
Group Type	: Not Used

Check %Dev(Standard) : No  
 Check Accuracy[%](Standard) : No  
 Check %Dev(Control) : No  
 Check Accuracy[%](Control) : No  
 Check %Dev(Additive) : No  
 Check Accuracy[%](Additive) : No  
 Check %Dev(Unknown) : No  
 Check Accuracy[%](Unknown) : No  
 Check Quantitation Limit : No  
 Check Detect Limit : No

## &lt;&lt;Compound Table&gt;&gt;

## &lt;Detector A&gt;

ID# : 1  
 Name : Methanol  
 Type : Target  
 Channel : Ch1  
 Retention Time : 14.400 min  
 Retention Index : 0  
 Concentration : [1]=3.016738 [2]=1.049395 [3]=0.4943277  
                           [4]=0.2893701 [5]=0.1127578 [6]=0.06136267  
                           [7]=0.01619725 [8]=3.016738 [9]=1.049395  
                           [10]=0.4943277 [11]=0.2893701 [12]=0.1127578  
                           [13]=0.06136267 [14]=0.01619725  
 Peak Selection : Default(Closest Peak)  
 Calculated by : Default(Area)  
 Curve Fit Type : Default(Linear)  
 Zero : Default(Not Forced)  
 Weight : Default(None)  
 Window/Band : Default(Window)  
 Spiked : 0.000  
 1st Coefficient : 4.720087e+005  
 Intersection : 1.693726e+003  
 Correction Factor : 1.000000  
 Standard concentration factor : 1.000000

ID# : 2  
 Name : Glycerin  
 Type : Target  
 Channel : Ch1  
 Retention Time : 10.000 min  
 Retention Index : 0  
 Concentration : [1]=2.958375 [2]=1.078646 [3]=0.5353454  
                           [4]=0.3066948 [5]=0.114594 [6]=0.05901699  
                           [7]=0.0117174 [8]=2.958375 [9]=1.078646  
                           [10]=0.5353454 [11]=0.3066948 [12]=0.114594  
                           [13]=0.05901699 [14]=0.0117174  
 Peak Selection : Default(Closest Peak)  
 Calculated by : Default(Area)  
 Curve Fit Type : Default(Linear)  
 Zero : Default(Not Forced)  
 Weight : Default(None)  
 Window/Band : Default(Window)  
 Spiked : 0.000  
 1st Coefficient : 7.326784e+006  
 Intersection : 2.573900e+005  
 Correction Factor : 1.000000  
 Standard concentration factor : 1.000000

ID# : 3  
 Name : n-Propanol  
 Type : Target  
 Channel : Ch1  
 Retention Time : 20.000 min  
 Retention Index : 0  
 Concentration : [1]=3.02526 [2]=1.092217 [3]=0.5139845  
                           [4]=0.3105323 [5]=0.09785473 [6]=0.04497364  
                           [7]=0.01087275 [8]=3.02526 [9]=1.092217  
                           [10]=0.5139845 [11]=0.3105323 [12]=0.09785473  
                           [13]=0.04497364 [14]=0.01087275  
 Peak Selection : Default(Closest Peak)  
 Calculated by : Default(Area)  
 Curve Fit Type : Default(Linear)  
 Zero : Default(Not Forced)  
 Weight : Default(None)  
 Window/Band : Default(Window)  
 Spiked : 0.000  
 1st Coefficient : 3.955755e+006  
 Intersection : -2.585461e+004

Correction Factor : 1.000000  
Standard concentration factor : 1.000000

ID# : 4  
Name : 1,2 Propandiol  
Type : Target  
Channel : Ch1  
Retention Time : 12.400 min  
Retention Index : 0  
Concentration : [1]=2.977546 [2]=1.016412 [3]=0.5030017  
[4]=0.3027638 [5]=0.1023958 [6]=0.04970167  
[7]=0.01157971 [8]=2.977546 [9]=1.016412  
[10]=0.5030017 [11]=0.3027638 [12]=0.1023958  
[13]=0.04970167 [14]=0.01157971

Peak Selection : Default(Closest Peak)  
Calculated by : Default(Area)  
Curve Fit Type : Default(Linear)  
Zero : Default(Not Forced)  
Weight : Default(None)  
Window/Band : Default(Window)  
Spiked : 0.000  
1st Coefficient : 5.771075e+006  
Intersection : 6.007717e+004  
Correction Factor : 1.000000  
Standard concentration factor : 1.000000

ID# : 5  
Name : 1,3 Propandiol  
Type : Target  
Channel : Ch1  
Retention Time : 13.000 min  
Retention Index : 0  
Concentration : [1]=2.976375 [2]=0.9968958 [3]=0.4990984  
[4]=0.2900131 [5]=0.10734 [6]=0.04944145  
[7]=0.0100184 [8]=2.976375 [9]=0.9968958  
[10]=0.4990984 [11]=0.2900131 [12]=0.10734  
[13]=0.04944145 [14]=0.0100184

Peak Selection : Default(Closest Peak)  
Calculated by : Default(Area)  
Curve Fit Type : Default(Linear)  
Zero : Default(Not Forced)  
Weight : Default(None)  
Window/Band : Default(Window)  
Spiked : 0.000  
1st Coefficient : 5.532080e+006  
Intersection : 6.014722e+004  
Correction Factor : 1.000000  
Standard concentration factor : 1.000000

ID# : 6  
Name : iso-Propanol  
Type : Target  
Channel : Ch1  
Retention Time : 16.825 min  
Retention Index : 0  
Concentration : [1]=3.03666 [2]=1.003405 [3]=0.5418687  
[4]=0.3101858 [5]=0.1067771 [6]=0.04972951  
[7]=0.01397083 [8]=3.03666 [9]=1.003405  
[10]=0.5418687 [11]=0.3101858 [12]=0.1067771  
[13]=0.04972951 [14]=0.01397083

Peak Selection : Default(Closest Peak)  
Calculated by : Default(Area)  
Curve Fit Type : Default(Linear)  
Zero : Default(Not Forced)  
Weight : Default(None)  
Window/Band : Default(Window)  
Spiked : 0.000  
1st Coefficient : 3.797216e+006  
Intersection : -2.284739e+004  
Correction Factor : 1.000000  
Standard concentration factor : 1.000000

ID# : 7  
Name : Hydroxyacetone  
Type : Target  
Channel : Ch1  
Retention Time : 13.300 min  
Retention Index : 0  
Concentration : [1]=2.855514 [2]=0.9609004 [3]=0.4875675

	[4]=0.3072624	[5]=0.1038742	[6]=0.04860286
	[7]=0.009361501	[8]=2.855514	[9]=0.9609004
	[10]=0.4875675	[11]=0.3072624	[12]=0.1038742
	[13]=0.04860286	[14]=0.009361501	

Peak Selection : Default(Closest Peak)  
 Calculated by : Default(Area)  
 Curve Fit Type : Default(Linear)  
 Zero : Default(Not Forced)  
 Weight : Default(None)  
 Window/Band : Default(Window)  
 Spiked : 0.000  
 1st Coefficient : 4.865699e+006  
 Intersection : 5.855022e+004  
 Correction Factor : 1.000000  
 Standard concentration factor : 1.000000

ID# : 8  
 Name : Ethylenglykol  
 Type : Target  
 Channel : Ch1  
 Retention Time : 12.200 min  
 Retention Index : 0  
 Concentration : [1]=2.933794 [2]=1.030353 [3]=0.4898163  
                   [4]=0.3033639 [5]=0.09840986 [6]=0.059971  
                   [7]=0.01068632 [8]=2.933794 [9]=1.030353  
                   [10]=0.4898163 [11]=0.3033639 [12]=0.09840986  
                   [13]=0.059971 [14]=0.01068632

Peak Selection : Default(Closest Peak)  
 Calculated by : Default(Area)  
 Curve Fit Type : Default(Linear)  
 Zero : Default(Not Forced)  
 Weight : Default(None)  
 Window/Band : Default(Window)  
 Spiked : 0.000  
 1st Coefficient : 4.284813e+006  
 Intersection : 4.449721e+003  
 Correction Factor : 1.000000  
 Standard concentration factor : 1.000000

ID# : 9  
 Name : Ethanol  
 Type : Target  
 Channel : Ch1  
 Retention Time : 16.000 min  
 Retention Index : 0  
 Concentration : [1]=3.010594 [2]=1.02339 [3]=0.5257763  
                   [4]=0.2939754 [5]=0.0961865 [6]=0.04960971  
                   [7]=0.01299818 [8]=3.010594 [9]=1.02339  
                   [10]=0.5257763 [11]=0.2939754 [12]=0.0961865  
                   [13]=0.04960971 [14]=0.01299818

Peak Selection : Default(Closest Peak)  
 Calculated by : Default(Area)  
 Curve Fit Type : Default(Linear)  
 Zero : Default(Not Forced)  
 Weight : Default(None)  
 Window/Band : Default(Window)  
 Spiked : 0.000  
 1st Coefficient : 2.109543e+006  
 Intersection : -9.590194e+003  
 Correction Factor : 1.000000  
 Standard concentration factor : 1.000000

ID# : 10  
 Name : Propionsäure  
 Type : Target  
 Channel : Ch1  
 Retention Time : 13.600 min  
 Retention Index : 0  
 Concentration : [1]=2.962704 [2]=0.9915078 [3]=0.5019324  
                   [4]=0.3085198 [5]=0.1036906 [6]=0.04835313  
                   [7]=0.01168534 [8]=2.962704 [9]=0.9915078  
                   [10]=0.5019324 [11]=0.3085198 [12]=0.1036906  
                   [13]=0.04835313 [14]=0.01168534

Peak Selection : Default(Closest Peak)  
 Calculated by : Default(Area)  
 Curve Fit Type : Default(Linear)  
 Zero : Default(Not Forced)  
 Weight : Default(None)  
 Window/Band : Default(Window)

Spiked : 0.000  
 1st Coefficient : 4.601450e+006  
 Intersection : -1.609005e+003  
 Correction Factor : 1.000000  
 Standard concentration factor : 1.000000

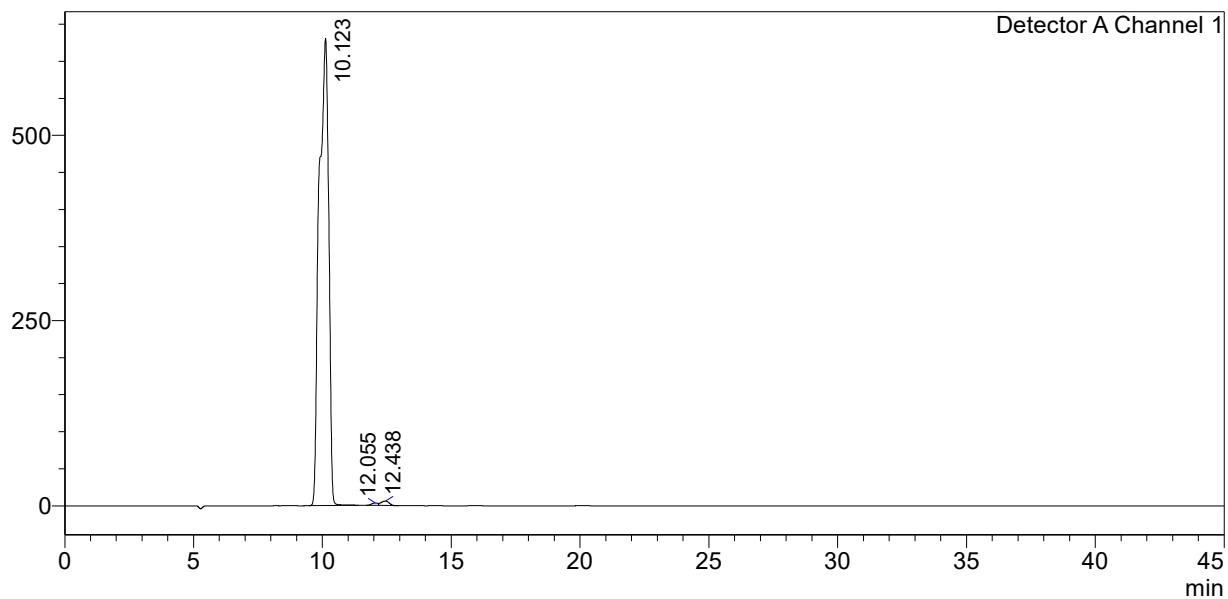
## &lt;&lt;Column Performance&gt;&gt;

## &lt;Detector A&gt;

Calculation Method : USP  
 Unretained Peak Time : Time at 1st Peak  
 Column Length : 150 mm  
 Calculate Identified Peaks Only : Off  
 Calculation of Relative Retention Time : Off

## &lt;Chromatogram&gt;

mV



## &lt;Peak Table&gt;

Detector A Channel 1

Peak#	Ret. Time	Area	Height	Conc.	Unit	Mark	Name
1	10.123	16282089	631071	2.187	mol/L		Glycerin
2	12.055	56391	3163	0.012	mol/L		Ethylenglykol
3	12.438	130604	5958	0.012	mol/L	V	1,2 Propandiol
Total		16469084	640192				